



Intruder Alarm Kit



- Complete alarm kit
- Mini panel and LCD keypad - grade 2
- Kit comprises 4xPIR's, 2 door contacts, live and dummy bell box, battery and 100 metre cable fixing kit

Code	Description
AVALKIT	Intruder alarm kit

Alarm Panel



- Blank end station
- 8 zone control panels
- For use with grade 2 remote keypad
- 9 users 32 characters

Code	Description
AVALP/LCD	Panel with LCD remote keypad

Speech Dialler



AVALAD

- Programmable to call home owner when the alarm panel is activated
- Up to 4 telephone numbers can be dialled

Code	Description
AVALAD	Speech dialler

Bell Boxes



- Grade 3 bell boxes

Code	Description
AVALBELL	Bell with strobe white
AVALBELLD	Dummy bell box white

Detectors and Contacts



AVALFC

Code	Description
AVALPD	PIR 12 metre with down view
AVALID	PIR 15 metre with small animal immunity - grade 2
AVALFC	Slim flush type contact white

Wire Free Remote Sensing Security System

- A complete, easy to install, comprehensive security system
- Match intelligent transmitters and receivers to your specification
- Wire free with a 70 metre range from transmitter to receiver
- Multiple switching allowing up to 12 transmitters to each receiver
- Simple to set up with integrated learn keys
- Remote audio alert and light control
- Easily programmed receiver units at the push of a button

Transmitters

NEW



AVRSS21TX



AVRSS22TX



AVRSS24TX



AVRSS25TX



AVRSS26TX



AVRSS27TX

- All transmitters have a 70 metre range
- All units operate at 433Mhz
- AVRSS21TX is compatible with AVTHL24

31

Receivers

NEW



AVRSS01RX



AVRSS02RX



AVRSS03RX



AVRSS05RX

- All units operate at 433Mhz
- AVRSS01RX is compatible with the AVTHL24 lamp

Code	Description
FLOODLIGHT IP44	
AVRSS01RX	500W floodlight with lamp LED receive indicator
CHIME/ALARM RECEIVER IP21	
AVRSS02RX	Chime and alarm mode High/low/off slider switch Battery operated (supplied)
13A PLUG THROUGH RECEIVER IP21	
AVRSS03RX	LED power on indicator Manual on/off button
RECEIVER RELAY IP21	
AVRSS04RX	2000W incandescent, 480W fluorescent or 8 amps switching capacity
ALARM PANEL RECEIVER IP21	
AVRSS05RX	Intruder alarm panel receiver 110dBa siren Instant arm, delayed arm and chime modes Status and low battery LED indicators 4 digit security code Battery operated (supplied)

Code	Description
PIR FLOODLIGHT IP44	
AVRSS21TX	500W floodlight with 110° PIR 12m PIR detection range Adjustable from 5 secs-12 mins
PIR TRANSMITTER IP44	
AVRSS22TX	110° PIR with 12m detection range Adjustable from 5 secs-12 mins
REMOTE CONTROL TRANSMITTER IP21	
AVRSS23TX	4 separate code channels Complete with battery
TRANSMITTER SWITCH IP21	
AVRSS24TX	Battery operated (supplied) LED on/off transmit indicator
MAGNETIC CONTACT TRANSMITTER IP21	
AVRSS25TX	Battery operated (supplied)
BELL PUSH TRANSMITTER IP44	
AVRSS26TX	Battery operated (supplied)
PIR LANTERN IP44	
AVRSS27TX	100W lantern with 110° PIR 12m PIR detection range Adjustable from 5 secs-12 mins



Audible warning of approach during daylight.
Plus audible warning and lantern illumination of approach during hours of darkness

**CHIME/
ALARM
RECEIVER**
AVRSS02RX



**100W
TRANSMITTER
LANTERN**
AVRSS27TX



Audible warning of approach through gate during daylight.
Plus audible warning and floodlight illumination of approach through gate during hours of darkness.

**500W
RECEIVER
FLOODLIGHT**
AVRSS01RX



**CHIME/
ALARM
RECEIVER**
AVRSS02RX



**100° PIR
TRANSMITTER**
AVRSS22TX



Audible alert to protect outbuilding with no mains power supply.
Magnetic contact for door and internal PIR to detect movement inside outbuilding.

**CHIME/
ALARM
RECEIVER**
AVRSS02RX



**MAGNETIC CONTACT
TRANSMITTER**
AVRSS25TX



**100° PIR
TRANSMITTER**
AVRSS22TX



5 Wire Economy Audio Door Entry Kits

NEW



AVDE1EC

- Easy to install
- Slimline surface door panel
- Complete with handset(s) and power supply
- Use with AVDELRR1 electric door release

Code	Description
AVDE1/EC	1 way audio door entry kit
AVDE2/EC	2 way audio door entry kit
AVDE3/EC	3 way audio door entry kit
AVDEHS/EC	Additional handset

2 Wire Audio Door Entry Kits

NEW



AVDE22F

- Robust kit containing a deluxe aluminium panel and speaker amplifier complete with volume control
- Complete with handset(s) and power supply
- Use with AVDELRR1 electric door release

Code	Description
AVDE12S	1 way surface
AVDE22S	2 way surface
AVDE32S	3 way surface
AVDE12F	1 way flush
AVDE22F	2 way flush
AVDE32F	3 way flush
AVDEHS2	Dual tone handset

Budget Video Audio Door Entry Kit

- Surface mounted door panel
- Colour monitor
- Suitable for sheltered external use
- Complete with plug-in power adaptor
- Use with AVDELRR1 electric door release



AVDE1VA

Code	Description
AVDE1VA	1 way colour video kit

5 Wire Audio Door Entry Kit with Integral Keypad



- Surface mounted door panel
- Complete with handset and power supply
- For use with up to 7 user codes
- Use with AVDELRR1 electric door release

Code	Description
AVDE1KP	1 way with integrated keypad

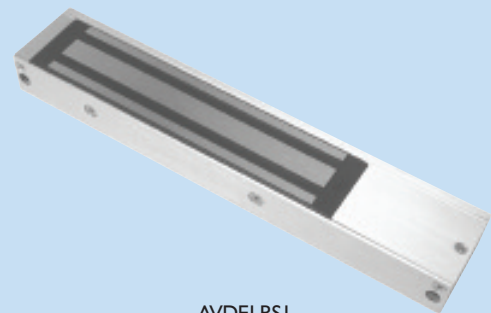
Electric Door Releases



AVDELRR1

Code	Description
AVDELRR1	Rim electric release with mortice plate 12V AC/DC - fail locked
AVDELRR2	Rim electric release with mortice plate 12V DC - fail locked
AVDELRR3	Rim electric release with mortice plate 12V DC - fail unlocked
AVDELRRC	Surface case inward opening

Slimline Electro Magnetic Locks

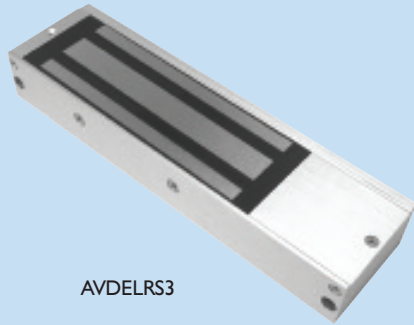


AVDELRS1

Code	Description
AVDELRS1	Single slimline magnetic lock 12/24V DC - unmonitored
AVDELRM1	Z&L bracket set for slimline magnet - inward opening
AVDELRM2	Adjustable L bracket for slimline magnet - outward opening



Standard Electro Magnetic Locks



AVDELR3

Code	Description
AVDELR3	Single standard magnetic lock 12/24V DC - unmonitored
AVDELRM3	Z&L bracket set for standard magnet - inward opening
AVDELRM4	Adjustable L bracket for standard magnet - outward opening

Single Door Proximity Access Control Kit

NEW



AVACK1

- Kit includes 12V DC power unit, user controller, proximity reader, 10 proximity fobs and AVDELRR1 door release
- Internal and external proximity reader
- For use with up to 999 users
- Master fob for easy programming

Code	Description
AVACK1	Single door proximity control kit
AVACKF	Additional proximity fob grey

Standalone Keypad

NEW



- Internal and external use
- For use with up to 10 user codes
- Surface or flush mounted
- IP67 rated
- Master fob for easy programming

Code	Description
AVACKP	Standalone keypad 12/24V AC/DC

Exit Buttons



AVDEEX1



AVDEEX3

Code	Description
AVDEEX1	Exit button white narrow rocker
AVDEEX2	Exit button stainless steel
AVDEEX3	Exit button green dome h/duty
AVDEEX4	Exit button white plastic narrow
AVDEEXB	Surface box for AVDEEX2/3

Emergency Break Glass Call Point



- Single pole
- For emergency door release

Code	Description
AVDELRE	Green emergency break glass

Boxed Power Supply Units

NEW



AVPS1

- Regulated DC output voltage
- Battery backup facility (battery not included)
- LED indicator

Code	Description
AVPS1	12V DC 1 amp
AVPS2	12V DC 2 amp
AVPS3	24V DC 3 amp

Digital Push Button Lock

- 4 to 10 digit access code
- Complete with 60mm backset tubular latch
- Suitable for door thickness of 35mm to 65mm



Code	Description
AVDEDDL	Push button lock satin chrome