



## Low Energy Compact Fluorescent Lamps

- High quality, long life energy saving lamps
- Low energy lamps use 80% less electricity than a standard GLS equivalent and last up to 8 times longer
- 8,000 hour life (standard GLS lamps have a 1,000 hour life)
- Wattage equivalents :
  - 7W low energy = 25/40W traditional lamp
  - 11W low energy = 60W traditional lamp
  - 15W low energy = 75W traditional lamp
  - 20W low energy = 100W traditional lamp

## 3U Multi Tube



- Replacement for standard GLS lamp
- 40mm wide
- 3 tube manufacture

Code	Description
<b>AVCFE11BC</b>	11W BC 121mm high
<b>AVCFE11ES</b>	11W ES 121mm high
<b>AVCFE15BC</b>	15W BC 133mm high
<b>AVCFE15ES</b>	15W ES 133mm high

## Spiral Lamps

**NEW**



- Replacement for standard GLS lamp
- 48mm wide

Code	Description
<b>AVCFS11BC</b>	11W BC 107mm high
<b>AVCFS11ES</b>	11W ES 107mm high
<b>AVCFS15BC</b>	15W BC 123mm high
<b>AVCFS15ES</b>	15W ES 123mm high
<b>AVCFS20BC</b>	20W BC 135mm high

## Candle Lamps

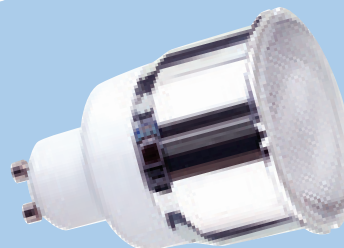


- Replacement for standard candle lamp
- 7W are 39mm wide and 11W are 41mm wide

Code	Description
<b>AVCFC7BC</b>	7W BC 123mm high
<b>AVCFC7SES</b>	7W SES 123mm high
<b>AVCF11BC</b>	11W BC 142mm high
<b>AVCF11SES</b>	11W SES 142mm high

## GU10 Compact Fluorescent Lamp

**NEW**



- Replacement for 35W and 50W GU10 lamp
- 46mm wide
- 76mm high

Code	Description
<b>AVGU10 11W</b>	11W GU10

## Linear Halogen Replacement Compact Fluorescent Lamp

**NEW**



- Direct replacement for 118mm tungsten halogen lamps
- Fits conventional 500W tungsten halogen floodlight
- 52 lumens per watt
- 8,000 hour life
- Built in reflector to maximise light output

Code	Description
<b>AVTHL24</b>	24W 118mm long

## LED Lamps

- High quality, long life energy saving LED lamps
- LED lamps use 90% less electricity than a standard GLS equivalent
- 50,000 hour life (standard GLS lamps have a 1,000 hour life) except AVLEDGU3 (20,000 hours)
- MR16 and GU10 lamps can be used in fittings without a cover glass
- Wattage equivalents :  
1W LED = 25W traditional lamp  
2W LED = 30W traditional lamp

## MR16 LED Lamp

**NEW**



- Low voltage dichroic lamp replacement
- Pure white LED light
- 50mm wide and 45mm long

Code	Description
AVLEDLV18	18 White LEDs 1.3W 12V

## GU10 LED Lamp

**NEW**

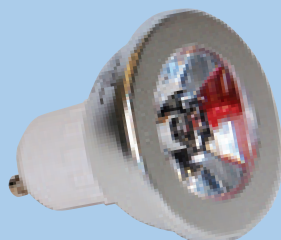


- Mains voltage GU10 lamp replacement
- Pure white LED light
- 50mm wide and 53mm long

Code	Description
AVLEDGU18	18 White LEDs 1.8W 240V

## High Power GU10 LED Lamp

**NEW**



- 20,000 hour lamp life
- Warm white LED light
- 50mm wide and 53mm long

Code	Description
AVLEDGU3	1 High power LED 3W 240V

## Advance GLS LED Lamp

**NEW**

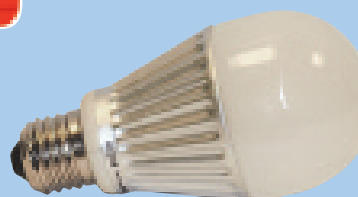


- Equivalent to a 25 watt GLS lamp
- Warm white colour
- Not dimmable

Code	Description
AVLEDGI	22 LEDs 1W 240V ES

## Reflector LED Lamp

**NEW**



- Equivalent to a 30 watt GLS lamp
- Warm white colour
- Not dimmable

Code	Description
AVLEDR2	2 High power LEDs 2W 240V ES

## Candle LED Lamp

**NEW**



- Equivalent to a 25 watt GLS lamp
- Warm white colour
- Not dimmable

Code	Description
AVLEDC1	22 White LEDs 1W 240V SES

## Round Golfball LED Lamp

**NEW**



- Equivalent to a 25 watt GLS lamp
- Warm white colour
- Not dimmable

Code	Description
AVLEDMI	22 White LEDs 1W 240V ES