

Storage Heaters



- Manual models charge throughout low tariff period
- Automatic models incorporate an ambient thermostat to optimise the charge to suit room conditions
- Snap on feet, simple wall fixing and quick assembly

Code	Description
AUTOMATIC	
AVSHA170	1.70kW automatic
AVSHA255	2.55kW automatic
AVSHA340	3.40kW automatic
MANUAL	
AVSHM085	0.85kW manual
AVSHM170	1.70kW manual
AVSHM255	2.55kW manual
AVSHM340	3.40kW manual

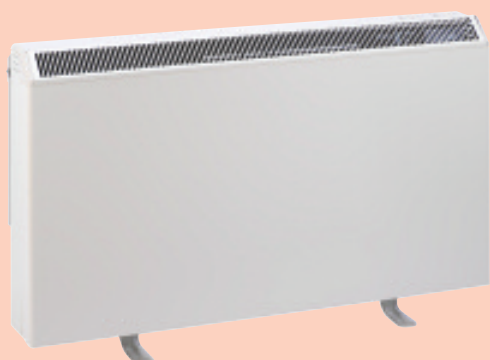
Panel Heaters



- Suitable for domestic applications
- Incorporates adjustable thermostat plus frost protection
- Thermal cut-out to prevent overheating
- Slim, compact with attractive white finish
- Wall mounted

Code	Description
AVPH075	0.75kW
AVPH125	1.25kW
AVPH150	1.50kW
AVPH200	2.00kW
WITH TIMER	
AVPH075T	0.75kW with timer
AVPH125T	1.25kW with timer
AVPH150T	1.50kW with timer
AVPH200T	2.00kW with timer

Combination Heaters



- Combined storage and convector heater
- Storage heater for comfortable heat around the clock
- Convector heater for additional heat when required
- Snap on feet, simple wall fixing and quick assembly

Code	Description
AUTOMATIC	
AVCSHA170	1.70kW + 1.00kW convector
AVCSHA255	2.55kW + 1.50kW convector
AVCSHA340	3.40kW + 1.75kW convector
MANUAL	
AVCSHM170	1.70kW + 1.00kW convector
AVCSHM255	2.55kW + 1.50kW convector
AVCSHM340	3.40kW + 1.75kW convector

Plinth Heaters



- For use in kitchens and utility rooms
- Available with and without thermostat
- 3 temperature settings: fan only, half heat and full heat

Code	Description
BASIC MODEL	
AVPL2W	2.00kW white
WITH THERMOSTAT	
AVPL2TS	2.00kW stainless steel
AVPL2TW	2.00kW white

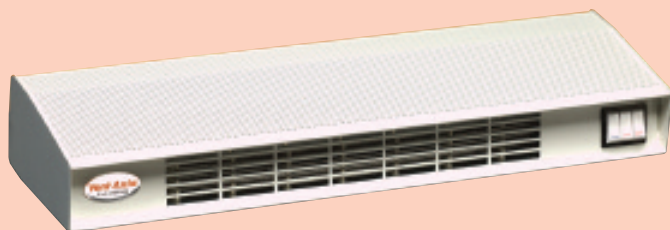
Convactor Heater



- Suitable for domestic and commercial use
- Floor standing or wall mounted
- 3 heat outputs: 0.75kW, 1.25kW and 2kW

Code	Description
AVCH2	2.00kW with thermostat

Warm Air Curtain



- Suitable for commercial applications
- Steel construction with white epoxy finish
- 3 way control switch

Code	Description
AVAC3	3.00kW over door warm air curtain

Downflow Heater



- Contains an automatic overheat thermal cut-out and thermal safety link overheat protector
- Pullcord operation with neon running light

Code	Description
AVDH2	2.00kW with thermostat

Tubular Heaters

NEW

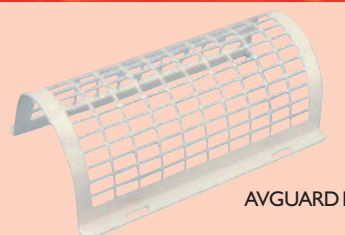


AVTH80/55

- Provide a gentle background heat, helping to reduce condensation, dampness and the formation of mould and mildew
- Fitted with automatic heat sensitive cut-out to prevent overheating
- Low energy use at 45W per foot
- Indoor heaters are complete with mounting brackets and IP55 heaters are complete with a floor stand

Code	Description
INDOOR HEATERS	
AVTH45N	12" 45W with 1m cable
AVTH80N	24" 80W with 1m cable
AVTH135N	36" 135W with 1m cable
AVTH180N	48" 180W with 1m cable
AVTH225N	60" 225W with 1m cable
AVTH270N	72" 270W with 1m cable
IP55 OUTDOOR HEATERS (GREEN)	
AVTH80/55	24" 80W with 2m cable & plug
AVTH180/55	48" 180W with 2m cable & plug

Tubular Heater Guards



AVGUARD1

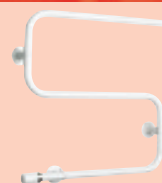
- Manufactured from pressed steel with white enamel finish

Code	Description
SINGLE	
AVGUARD1	12" for single heaters
AVGUARD2	24" for single heaters
AVGUARD3	36" for single heaters
AVGUARD4	48" for single heaters
AVGUARD5	60" for single heaters
AVGUARD6	72" for single heaters
DOUBLE	
AVGUARD42	48" for double heaters
AVGUARD52	60" for double heaters
AVGUARD62	72" for double heaters

Towel Rails

NEW

- Low power consumption
- Fabricated from high quality extruded steel tube
- Fixing kit included
- White or chrome finish



AVTR40W

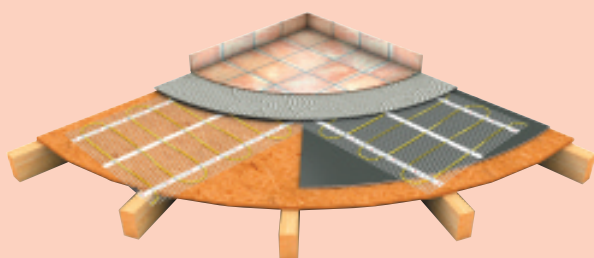
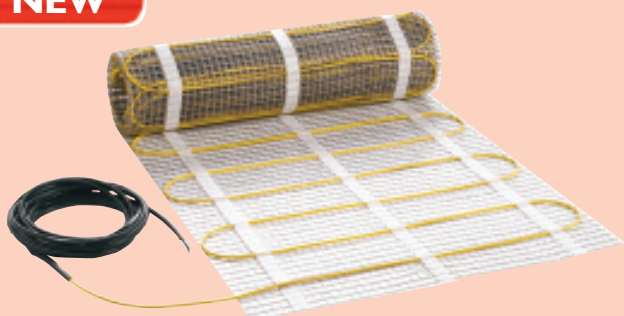
Code	Description
AVTR40W	40W white
AVTR40C	40W chrome

Underfloor Heating

- A range of underfloor heating products to cater for every solution
- Available in mat, flex or ribbon formats with a complete range of thermostats
- We offer a free design service from our supply partner

Underfloor Heating Mats (for timber based floors)

NEW

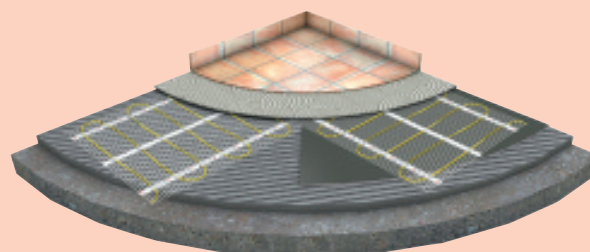
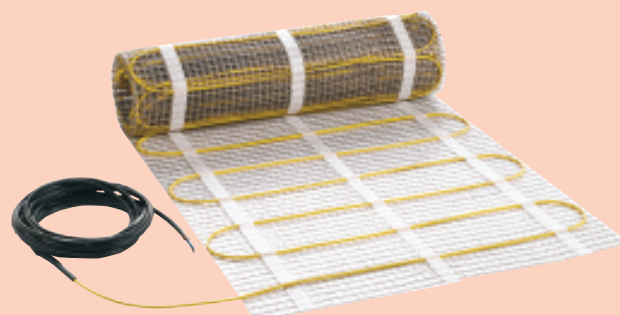


- Select the mat to suit your room coverage and then choose a thermostat from the next page
- Specifically designed for installation directly onto timber based floors, under ceramic, porcelain, slate and natural stone tiles
- When using laminate, engineered timber or vinyl floors a self levelling compound should be used
- 100W/m² output
- Self adhesive mesh with ultra thin heating cable
- 100% aluminium earth sheath
- 3m cold tail connection lead
- 15 year guarantee

Code	Description
AVUHM100-0.5	50W 0.5m x 1m 0.5m ²
AVUHM100-1	100W 0.5m x 2m 1.0m ²
AVUHM100-1.5	150W 0.5m x 3m 1.5m ²
AVUHM100-2	200W 0.5m x 4m 2.0m ²
AVUHM100-2.5	250W 0.5m x 5m 2.5m ²
AVUHM100-3	300W 0.5m x 6m 3.0m ²
AVUHM100-3.5	350W 0.5m x 7m 3.5m ²
AVUHM100-4	400W 0.5m x 8m 4.0m ²
AVUHM100-5	500W 0.5m x 10m 5.0m ²
AVUHM100-6	600W 0.5m x 12m 6.0m ²
AVUHM100-7	700W 0.5m x 14m 7.0m ²
AVUHM100-8	800W 0.5m x 16m 8.0m ²
AVUHM100-9	900W 0.5m x 18m 9.0m ²
AVUHM100-10	1.0kW 0.5m x 20m 10.0m ²
AVUHM100-12	1.2kW 0.5m x 24m 12.0m ²

Underfloor Heating Mats (for concrete based floors)

NEW



- Select the mat to suit your room coverage and then choose a thermostat from the next page
- Specifically designed for installation directly onto concrete based floors, under ceramic, porcelain, slate and natural stone tiles
- When using laminate, engineered timber or vinyl floors a self levelling compound should be used
- 150W/m² output
- Self adhesive mesh with ultra thin heating cable
- 100% aluminium earth sheath
- 3m cold tail connection lead
- 15 year guarantee

Code	Description
AVUHM150-0.5	75W 0.5m x 1m 0.5m ²
AVUHM150-1	150W 0.5m x 2m 1.0m ²
AVUHM150-1.5	225W 0.5m x 3m 1.5m ²
AVUHM150-2	300W 0.5m x 4m 2.0m ²
AVUHM150-2.5	375W 0.5m x 5m 2.5m ²
AVUHM150-3	450W 0.5m x 6m 3.0m ²
AVUHM150-3.5	525W 0.5m x 7m 3.5m ²
AVUHM150-4	600W 0.5m x 8m 4.0m ²
AVUHM150-5	750W 0.5m x 10m 5.0m ²
AVUHM150-6	900W 0.5m x 12m 6.0m ²
AVUHM150-7	1.05kW 0.5m x 14m 7.0m ²
AVUHM150-8	1.2kW 0.5m x 16m 8.0m ²
AVUHM150-9	1.35kW 0.5m x 18m 9.0m ²
AVUHM150-10	1.5kW 0.5m x 20m 10.0m ²
AVUHM150-12	1.8kW 0.5m x 24m 12.0m ²

Underfloor Heating Flex Cable Kits NEW



- Kits comprise your chosen cable length, AVUHT761 programmable controller, measuring gauge, double-sided fixing tape and self-adhesive mesh
- Loose laid cable system providing a flexible and easy under tile heating solution for any floor size or shape
- Suitable for use under most floor types such as ceramic and porcelain tiles, limestone etc
- 10W/m² output
- Thin twin conductor heating element
- 30mm minimum bending radius
- 15 year guarantee

Code	Description
AVUHC300K	30m 300W 1.5-2.4m ²
AVUHC400K	40m 400W 2.5-3.1m ²
AVUHC600K	60m 600W 3.2-4.4m ²
AVUHC800K	80m 800W 4.5-5.9m ²
AVUHC1000K	100m 1.0kW 6.0-6.9m ²
AVUHC1200K	120m 1.2kW 7.0-8.4m ²
AVUHC1400K	140m 1.4kW 8.5-9.9m ²
AVUHC1600K	100+60m 1.6kW 10.0-11.4m ²
AVUHC1800K	100+80m 1.8kW 11.5-12.9m ²
AVUHC2000K	2x100m 2.0kW 13.0-14.4m ²
AVUHC2200K	100+120m 2.2kW 14.5-15.9m ²
AVUHC2400K	2x120m 2.4kW 16.0-17.4m ²
AVUHC2600K	140+120m 2.6kW 17.5-18.9m ²
AVUHC2800K	2x140m 2.8kW 19.0-20.4m ²
AVUHC3000K	3x100m 3.0kW 20.5-21.9m ²

Underfloor Heating Ribbon Mats NEW



- Specifically designed for heating carpeted and timber surfaces
- The low working temperature allows direct installation of timber laminate, parquet or carpet above the heating mat with no danger of damaging the colour, texture or coating of these floor coverings
- Palziv and Duralay Heatflow underlays are ideally suited for use with ribbon mats
- Constructed from flat, amorphous, metal ribbons covered by two layers of polyethylene electric insulation
- Ribbons cover 30% of the heating mat providing a high level of even heat
- Ultra thin heating ribbon
- 150W/m² output
- 15 year guarantee

Code	Description
AVUHR0512	75W 0.5m x 1.2m 0.6m ²
AVUHR0515	113W 0.5m x 1.5m 0.75m ²
AVUHR0520	150W 0.5m x 2.0m 1.0m ²
AVUHR0525	187W 0.5m x 2.5m 1.25m ²
AVUHR0530	225W 0.5m x 3.0m 1.5m ²
AVUHR0535	262W 0.5m x 3.5m 1.75m ²
AVUHR0540	300W 0.5m x 4.0m 2.0m ²
AVUHR0545	337W 0.5m x 4.5m 2.25m ²
AVUHR0550	375W 0.5m x 5.0m 2.5m ²
AVUHR0555	412W 0.5m x 5.5m 2.75m ²
AVUHR0560	480W 0.5m x 6.0m 3.0m ²
AVUHR1010	150W 1.0m x 1.0m 1.0m ²
AVUHR1015	225W 1.0m x 1.5m 1.5m ²
AVUHR1020	300W 1.0m x 2.0m 2.0m ²
AVUHR1025	375W 1.0m x 2.5m 2.5m ²
AVUHR1030	450W 1.0m x 3.0m 3.0m ²
AVUHR1035	525W 1.0m x 3.5m 3.5m ²

Underfloor Heating Thermostats NEW



- AVUHT760 and AVUHT761 have floor sensors only
- AVUHT762 has floor and room sensors
- 3450W switching capacity at 230V
- 5°C to 40°C temperature range
- 3 year guarantee

Code	Description
AVUHT760	Manual non-programmable
AVUHT761	Electronic 7 day programmable
AVUHT762	Electronic 7 day programmable