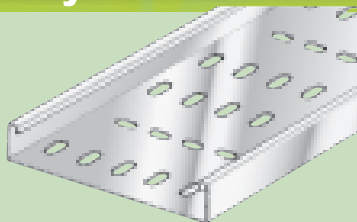




Light Duty Cable Tray

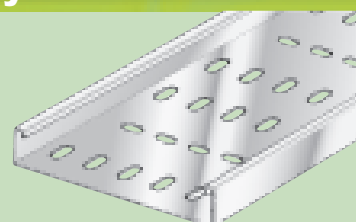
- Hot dipped, galvanised steel (pre-galvanised)
- Supplied in 3 metre lengths
- Single flanged, perforated tray



Code	Description
AVLDT050TR	50mm wide 3 metres
AVLDT075TR	75mm wide 3 metres
AVLDT100TR	100mm wide 3 metres
AVLDT150TR	150mm wide 3 metres
AVLDT225TR	225mm wide 3 metres
AVLDT300TR	300mm wide 3 metres

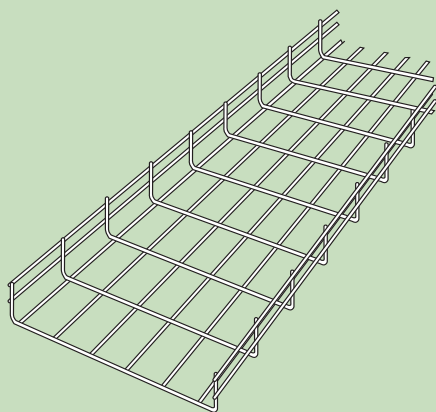
Medium Duty Tray

- Hot dipped, galvanised steel (pre-galvanised)
- Supplied in 3 metre lengths
- Return flanged, perforated tray



Code	Description
AVMDT050TR	50mm wide 3 metres
AVMDT075TR	75mm wide 3 metres
AVMDT100TR	100mm wide 3 metres
AVMDT150TR	150mm wide 3 metres
AVMDT225TR	225mm wide 3 metres
AVMDT300TR	300mm wide 3 metres
AVMDT450TR	450mm wide 3 metres
AVMDT600TR	600mm wide 3 metres

Steel Wire Cable Tray



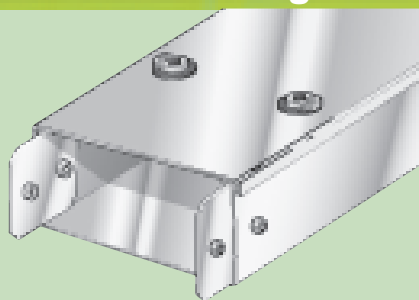
- Electrically welded steel mesh cable tray
- Includes a safety edge to prevent personal injury and cable damage
- Cut, bend and link system allows easy adaptation to every installation
- Wide range of accessories available
- Bichromate electrolytic zinc-plated (EB) for strength

Code	Description
AVWT6060EB	60mm wide 60mm flange wire tray 3 metres
AVWT60100EB	100mm wide 60mm flange wire tray 3 metres
AVWT60150EB	150mm wide 60mm flange wire tray 3 metres
AVWT60200EB	200mm wide 60mm flange wire tray 3 metres
AVWT60300EB	300mm wide 60mm flange wire tray 3 metres
AVWT60450EB	450mm wide 60mm flange wire tray 3 metres
AVWTSS	Side support for 60mm flange tray
AVWTMUB	Mini universal bracket
AVWTCC	Click connector
AVWTRJC	Reinforced joint clamp (3 part)
AVWTCHP8	Central hanging plate M8
AVWTCHP10	Central hanging plate M10
AVWTGB	Press fit gland bracket 21mm/23mm/29mm entries
AVWTSPL	Splice plate
AVWTBC	Bolt croppers 450mm

Medium Duty Tray Accessories

Code	Description
50MM	
AVMDT050FB	50mm flat bend
AVMDT050FT	50mm flat tee
75MM	
AVMDT075HB	75mm 45° flat bend
AVMDT075FB	75mm flat bend
AVMDT075FT	75mm flat tee
100MM	
AVMDT100HB	100mm 45° bend
AVMDT100FB	100mm flat bend
AVMDT100FT	100mm flat tee
AVMDT100FW	100mm 4 way crossover
150MM	
AVMDT150HB	150mm 45° flat bend
AVMDT150FB	150mm flat bend
AVMDT150FT	150mm flat tee
AVMDT150IN	150mm internal riser
225MM	
AVMDT225HB	225mm 45° flat bend
AVMDT225FB	225mm flat bend
AVMDT225FT	225mm flat tee
AVMDT225IN	225mm internal riser
300MM	
AVMDT300/225RE	300mm-225mm reducer
AVMDT300HB	300mm 45° flat bend
AVMDT300FB	300mm flat bend
AVMDT300FT	300mm flat tee
AVMDT300IN	300mm internal riser
450MM	
AVMDT450FB	450mm flat bend
AVMDT450FT	450mm flat tee
AVMDT450IN	450mm internal riser
600MM	
AVMDT600FB	600mm flat bend
AVMDT600FT	600mm flat tee
COUPLERS	
AVMDTSC	Straight coupler (per pair)
STAND OFF BRACKETS	
AVSOB50/25	50mm wide 25mm deep
AVSOB50/50	50mm wide 50mm deep

Standard Steel Cable Trunking



- Hot dipped, galvanised steel(pre-galvanised)
- Supplied in 3 metre lengths
- Complete with speed lock cover, connector, tinned copper earth continuity link and connector fixing screws

Code	Description
AVST22	50mm x 50mm 3 metres
AVST33	75mm x 75mm 3 metres
AVST42	100mm x 50mm 3 metres
AVST44	100mm x 100mm 3 metres
AVST66	150mm x 150mm 3 metres

Trunking Cover

- Hot dipped, galvanised steel(pre-galvanised)
- Speed lock spare trunking cover

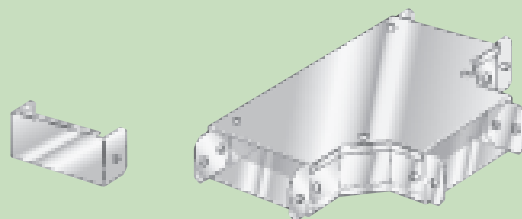
Code	Description
AVSA2SLC	50mm wide 3 metres
AVSA3SLC	75mm wide 3 metres
AVSA4SLC	100mm wide 3 metres
AVSA6SLC	150mm wide 3 metres

Standard Trunking Accessories

- Hot dipped, galvanised steel(pre-galvanised)

Code	Description
STOP ENDS	
AVSA22SE	50mm x 50mm
AVSA33SE	75mm x 75mm
AVSA42SE	100mm x 50mm
AVSA44SE	100mm x 100mm
AVSA66SE	150mm x 150mm
STIRRUP HANGERS	
AVSA22HA	50mm x 50mm
AVSA33HA	75mm x 75mm
AVSA44HA	100mm x 100mm
AVSA66HA	150mm x 150mm
OUTLET FLANGES	
AVSA2OF	50mm high
AVSA3OF	75mm high
AVSA4OF	100mm high
AVSA6OF	150mm high
SPARE TRUNKING COUPLERS	
AVSA2STC	50mm x 50mm (per pair)
AVSA3STC	75mm x 75mm (per pair)
AVSA4STC	100mm x 100mm (per pair)
AVSA6STC	150mm x 150mm (per pair)
OTHER ACCESSORIES	
AVSAELK	Earth links (per 10)
AVSACON	Connector screws (per 10)

Standard Trunking Accessories

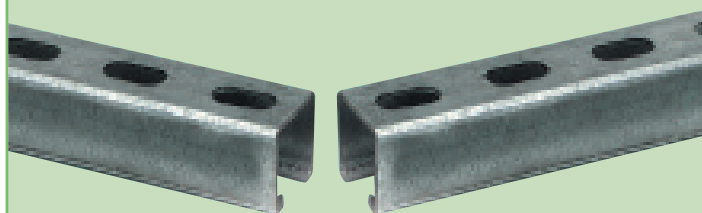


- Hot dipped, galvanised steel(pre-galvanised)

Code	Description
50MM x 50MM BENDS	
AVSA2245E	50mm x 50mm 45° external lid
AVSA2245I	50mm x 50mm 45° internal lid
AVSA2245T	50mm x 50mm 45° top lid
AVSA2290E	50mm x 50mm 90° external lid
AVSA2290I	50mm x 50mm 90° internal lid
AVSA2290T	50mm x 50mm 90° top lid
75MM x 75MM BENDS	
AVSA3345E	75mm x 75mm 45° external lid
AVSA3345I	75mm x 75mm 45° internal lid
AVSA3345T	75mm x 75mm 45° top lid
AVSA3390E	75mm x 75mm 90° external lid
AVSA3390I	75mm x 75mm 90° internal lid
AVSA3390T	75mm x 75mm 90° top lid
100MM x 50MM BENDS	
AVSA4245E	100mm x 50mm 45° external lid
AVSA4245I	100mm x 50mm 45° internal lid
AVSA4245T	100mm x 50mm 45° top lid
AVSA4290E	100mm x 50mm 90° external lid
AVSA4290I	100mm x 50mm 90° internal lid
AVSA4290T	100mm x 50mm 90° top lid
100MM x 100MM BENDS	
AVSA4445E	100mm x 100mm 45° external lid
AVSA4445I	100mm x 100mm 45° internal lid
AVSA4445T	100mm x 100mm 45° top lid
AVSA4490E	100mm x 100mm 90° external lid
AVSA4490I	100mm x 100mm 90° internal lid
AVSA4490T	100mm x 100mm 90° top lid
150MM x 150MM BENDS	
AVSA6645E	150mm x 150mm 45° external lid
AVSA6645I	150mm x 150mm 45° internal lid
AVSA6645T	150mm x 150mm 45° top lid
AVSA6690E	150mm x 150mm 90° external lid
AVSA6690I	150mm x 150mm 90° internal lid
AVSA6690T	150mm x 150mm 90° top lid
REDUCERS	
AVSA3322RE	75mm x 75mm to 50mm x 50mm
AVSA4422RE	100mm x 100mm to 50mm x 50mm
AVSA4433RE	100mm x 100mm to 75mm x 75mm
AVSA6633RE	150mm x 150mm to 75mm x 75mm
AVSA6644RE	150mm x 150mm to 100mm x 100mm
TEES	
AVSA22TTC	50mm x 50mm top lid
AVSA33TTC	75mm x 75mm top lid
AVSA42TTC	100mm x 50mm top lid
AVSA44TTC	100mm x 100mm top lid
AVSA66TTC	150mm x 150mm top lid



Channel Support Systems



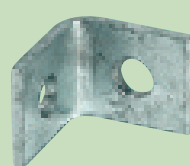
- Manufactured in accordance with BS6946
- Available in 21mm or 41mm depth
- Choice of 1.5mm or 2.5mm material thickness
- Supplied in 3 metre lengths, plain or slotted
- Pre-galvanised finish

Code	Description
SLOTTED SIDES	
AVCH4115PGS	41mm x 41mm x 1.5mm 3 metres
AVCH2115PGS	41mm x 21mm x 1.5mm 3 metres
AVCH4125PGS	41mm x 41mm x 2.5mm 3 metres
AVCH2125PGS	41mm x 21mm x 2.5mm 3 metres
PLAIN SIDES	
AVCH2115PG	41mm x 21mm x 1.5mm 3 metres
AVCH4115PG	41mm x 41mm x 1.5mm 3 metres
AVCH4125PG	41mm x 41mm x 2.5mm 3 metres

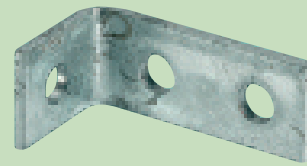
Channel Accessories

Code	Description
COVER	
AVCHS41CLW3	White PVC cover 3 metres
END CAPS	
AVCHPVC21B	41mm x 21mm black end cap
AVCHPVC21W	41mm x 21mm white end cap
AVCHPVC41B	41mm x 41mm black end cap
AVCHPVC41W	41mm x 41mm white end cap
90° BRACKETS	
AVCHSA600	Bracket 2 hole (1+1)
AVCHSA601	Bracket 2 hole (1+1)
AVCHSA602	Bracket 3 hole (2+1)
AVCHSA603	Bracket 3 hole (2+1)
AVCHSA604	Bracket 3 hole (2+1)
AVCHSA605	Bracket 4 hole (2+2)
AVCHSA612	Welded angle bracket 4 hole
FLAT PLATES, BENDS & TEES	
AVCHSF501/06	Square plate washer 1 hole 6mm
AVCHSF501/08	Square plate washer 1 hole 8mm
AVCHSF501/10	Square plate washer 1 hole 10mm
AVCHSF501/12	Square plate washer 1 hole 12mm
AVCHSF502	Flat plate 2 hole
AVCHSF503	Flat plate 3 hole
AVCHSF504	Flat plate 4 hole
AVCHSF506	Flat bend 3 hole
AVCHSF507	Flat tee 4 hole

Channel Accessories



AVCHSA601



AVCHSA604



AVCHSA605

Code	Description
BEAM CLAMPS	
AVCHBC401CP	Tapped M10 and cone point
AVCHBC402CP	Tapped M10 and cone point
AVCHBC404CP	Deep window bracket
AVCHBC407CP	Shallow window bracket
AVCH10FC	Flange clamp M10
CANTILEVER ARMS	
AVCHS300B	300mm 1 hole and 1 nib plate
AVCHS450B	450mm 1 hole and 1 nib plate
AVCHS600A	600mm 1 hole and 1 nib plate
M6 FIXINGS	
AVCHLN06	M6 channel nut - long spring (per 100)
AVCHPN06	M6 channel nut - no spring (per 100)
AVCHSN06	M6 channel nut - short spring (per 100)
AVCH06LW	M6 shakeproof washer (per 100)
AVCH06WN	M6 wedge nuts (per 100)
AVCH06X80EB	M6 x 80mm eyebolt (per 100)
M8 FIXINGS	
AVCHLN08	M8 channel nut - long spring (per 100)
AVCHPN08	M8 channel nut - no spring (per 100)
AVCHSN08	M8 channel nut - short spring (per 100)
AVCH08WN	M8 wedge nuts (per 100)
AVCH08X80EB	M8 x 80mm eyebolt (per 100)
M10 FIXINGS	
AVCHLN10	M10 channel nut - long spring (per 100)
AVCHPN10	M10 channel nut - no spring (per 100)
AVCHSN10	M10 channel nut - short spring (per 100)
AVCH10WN	M10 wedge nuts (per 100)
M12 FIXINGS	
AVCHLN12	M12 channel nut - long spring (per 100)
AVCHSN12	M12 channel nut - short spring (per 100)
OTHER ACCESSORIES	
AVCHBP305	Double fix base pole
AVCHBP307	Single delta plate
AVCHSU808	Internal connector 41mm x 41mm
AVCHSU809	Internal connector 41mm x 21mm

Spring Steel Fasteners



AVCC1



AVCMH10F1



AVCE912



AVCXS89

- Priced per bag (25 clips per bag)

Code	Description
EDGE CLIPS	
AVCXS89	2-4mm beam 8-9mm ø
AVCXS1011	2-4mm beam 10-11mm ø
AVCXS1214	2-4mm beam 12-14mm ø
AVCXS1519	2-4mm beam 15-19mm ø
AVCXS2024	2-4mm beam 20-24mm ø
AVCXM89	4-7mm beam 8-9mm ø
AVCXM1011	4-7mm beam 10-11mm ø
AVCXM1214	4-7mm beam 12-14mm ø
AVCXM1519	4-7mm beam 15-19mm ø
AVCXM2024	4-7mm beam 20-24mm ø
AVCXL89	8-12mm beam 8-9mm ø
AVCXL1011	8-12mm beam 10-11mm ø
AVCXL1214	8-12mm beam 12-14mm ø
AVCXL1519	8-12mm beam 15-19mm ø
AVCXL2024	8-12mm beam 20-24mm ø

HORIZONTAL BEAM CLIPS	
AVCE12	2-3mm beam 70kg load
AVCE24	3-8mm beam 90kg load
AVCE58	8-14mm beam 90kg load
AVCE912	14-20mm beam 90kg load

HORIZONTAL CONDUIT CLIPS	
AVCG812E24	3-8mm beam 18-27mm ø
AVCG812E58	8-14mm beam 18-27mm ø

BEAM CLAMP	
AVCC1	1.5-18mm 45kg load

VERTICAL BEAM CLIPS	
AVCH4F1	1.5-4mm beam M6 ø
AVCMH8F1	1.5-4mm beam M8 ø
AVCMH10F1	1.5-4mm beam M10 ø

VERTICAL EDGE CLIP	
AVCF3	1.5-6mm 7mm hole 70kg load

PURLIN HANGERS	
AVCF12	Z-purlin hanger 7mm hole

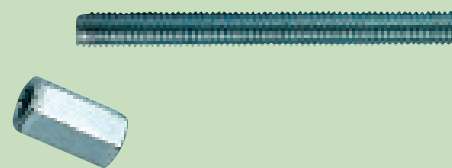
CONDUIT CLIP	
AVCP8	7mm hole 18-22mm ø

ROD HANGER	
AVCW12	M4-M6 rod 19-23mm ø

T BAR FASTENER	
AVCMA416	25mm clip M6x16mm stud
AVCMAX416	25mm scissor clip M6x16mm stud

Threaded Rod

- Bright zinc plated
- Rod supplied in 3 metre lengths



Code	Description
THREADED ROD	
AVTR6/3	M6 3 metres
AVTR8/3	M8 3 metres
AVTR10/3	M10 3 metres
AVTR12/3	M12 3 metres
CONNECTORS	
AVTRC6	M6 (each)
AVTRC8	M8 (each)
AVTRC10	M10 (each)
AVTRC12	M12 (each)

3 Compartment Floor Boxes

- 3 compartment base box with hinged lid and grey carpet trim
- Interchangeable mounting plates
- Pre-galvanised lower box with 20mm & 25mm knockouts



Code	Description
FLOOR BOXES	
AVFB3	3 compartment empty box
AVFB3C	Box fitted with 2 x 13 amp socket, 4 x RJ45 data plate and blank plate
ACCESSORY PLATES	
AVFB3TD	2 x 1 gang data plate
AVFB3TA	2 gang accessory plate
AVFB3FD	4 x LJU6C/RJ45 plate
AVFB3BP	Blank plate
AVFB3TS	Twin switched socket and plate

Flexible Conduit Packs

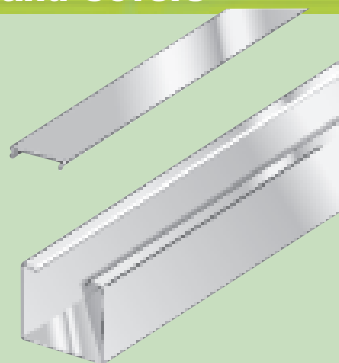
- Nylon and polypropylene packs include - 10 metres of conduit, 10 fittings and 10 locknuts
- Fitting Kits include 10 fittings and 10 locknuts



Code	Description
CONTRACTOR PACKS	
AVFC20NYB	20mm black nylon pack IP66
AVFC25NYB	25mm black nylon pack IP66
AVFC20PG	20mm grey polypropylene pack IP40
FITTING KITS	
AVFCG20B	20mm black fittings/locknut kit
AVFCG25B	25mm black fittings/locknut kit



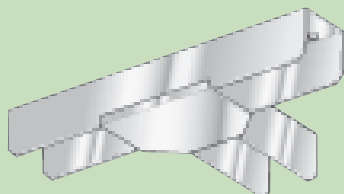
Lighting Trunking and Covers



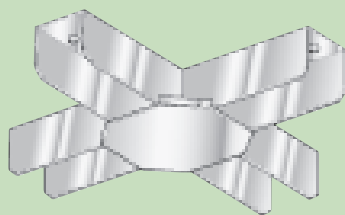
- Hot dipped galvanised steel
- Trunking supplied in 3.66 metre or 5 metre lengths
- Pre-galvanised

Code	Description
LIGHTING TRUNKING	
AVLTI.0G 3.66M	3.66 metres
AVLTI.0G 5M	5 metres
COVERS	
AVLTPC	PVC white 2 metres
AVLTGC	Galvanised 2 metres

Lighting Trunking Accessories



AVLAFT



AVLA4WI

Code	Description
AVLA90E	90° external bend
AVLA90I	90° internal bend
AVLA90T	90° flat bend
AVLAFT	Flat tee
AVLA4WI	4 way intersection
AVLASE	Stop end
AVLACR	Cable retainers (per 10)
AVLALC	Long coupler
AVLAFS	Fitting suspension unit
AVLATH10	Trunking hanger 10mm hole
AVLAGC	Die-cast girder clamp
AVLAOF	Outlet flange

Adaptable Boxes

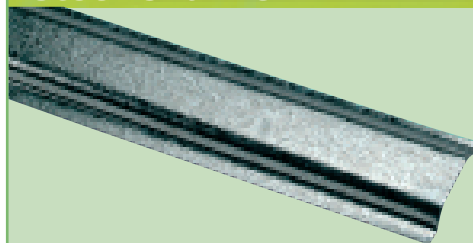


- Available with plain sides or knockouts
- Galvanised finish

Code	Description
AVAB331.5**	75 x 75 x 37mm
AVAB332**	75 x 75 x 50mm
AVAB333**	75 x 75 x 75mm
AVAB441.5**	100 x 100 x 37mm
AVAB442**	100 x 100 x 50mm
AVAB443**	100 x 100 x 75mm
AVAB444**	100 x 100 x 100mm
AVAB642**	150 x 100 x 50mm
AVAB643**	150 x 100 x 75mm
AVAB662**	150 x 150 x 50mm
AVAB663**	150 x 150 x 75mm
AVAB664**	150 x 150 x 100mm
AVAB962**	225 x 150 x 50mm
AVAB963**	225 x 150 x 75mm
AVAB964**	225 x 150 x 100mm
AVAB993**	225 x 225 x 75mm
AVAB994**	225 x 225 x 100mm
AVAB12123**	300 x 300 x 75mm
AVAB12124**	300 x 300 x 100mm

** replace with GK for galvanised boxes with knockouts
 ** replace with GP for galvanised boxes with plain sides

Steel Channel



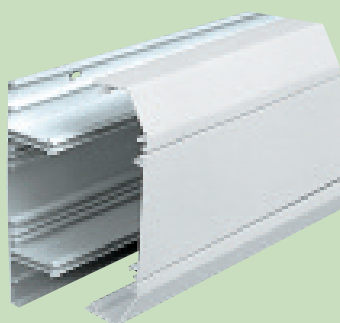
- Hot dipped galvanised steel
- Supplied in 2 metre lengths

Code	Description
AVSC12	12mm wide 2 metres
AVSC25	25mm wide 2 metres
AVSC38	38mm wide 2 metres
AVSC63	63mm wide 2 metres

3 Compartment Trunking

NEW

- 160mm x 50mm
- Dado or skirting trunking options
- Built in cable retainers and pre-drilled base
- Use AV3T1CL and AV3T1TB for top and centre lid of skirting trunking



AV3T1C WH

Code	Description
DADO TRUNKING	
AV3T1C WH	Complete unit 3 metres
AV3T1B WH	Trunking base 3 metres
AV3T1CL WH	Centre lid 3 metres
AV3T1TB WH	Chamfered lid 3 metres
SKIRTING TRUNKING	
AV3T2C WH	Complete unit 3 metres
AV3T2TB WH	Square lid 3 metres

Dado Trunking Accessories

NEW



AV3T1IB WH



AV3T1EB WH



AV3T1CO WH

Code	Description
DADO TRUNKING ACCESSORIES	
AV3T1CO WH	Coupler
AV3T1EB WH	External bend
AV3T1IB WH	Internal bend
AV3T1EC WH	End cap
AV3T1FA WH	Flat angle
AV3T1FT WH	Flat tee
SKIRTING TRUNKING ACCESSORIES	
AV3T2CO WH	Coupler
AV3T2EB WH	External bend
AV3T2IB WH	Internal bend
AV3T2ECL WH	End cap (left hand)
AV3T2ECR WH	End cap (right hand)
AV3T2FAD WH	Flat angle (down)
AV3T2FAU WH	Flat angle (up)
AV3T2FTD WH	Flat tee (down)
AV3T2FTU WH	Flat tee (up)

3 Compartment Trunking Back Boxes

NEW



AV3TBB2 WH

Code	Description
AV3TBB1 WH	One gang outlet box
AV3TBB2 WH	Two gang outlet box

Heavy Duty Cable Trunking

NEW

- Manufactured from high impact U-PVC



Code	Description
AVTK22 WH	50x50mm 3 metres
AVTK32 WH	75x50mm 3 metres
AVTK33 WH	75x75mm 3 metres
AVTK42 WH	100x50mm 3 metres
AVTK44 WH	100x100mm 3 metres

PVC Channel

NEW



AVPC25 WH

Code	Description
AVPC13 WH	13mm wide 2 metres
AVPC25 WH	25mm wide 2 metres
AVPC38 WH	38mm wide 2 metres

PVC Accessories



Code	Description
AVBS20HG	20mm bending spring (HG)
AVBS25HG	25mm bending spring (HG)
AVADH250	PVC adhesive 250ml (tin)